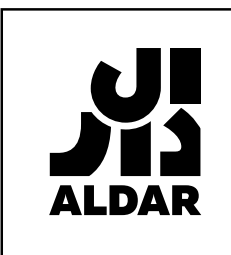
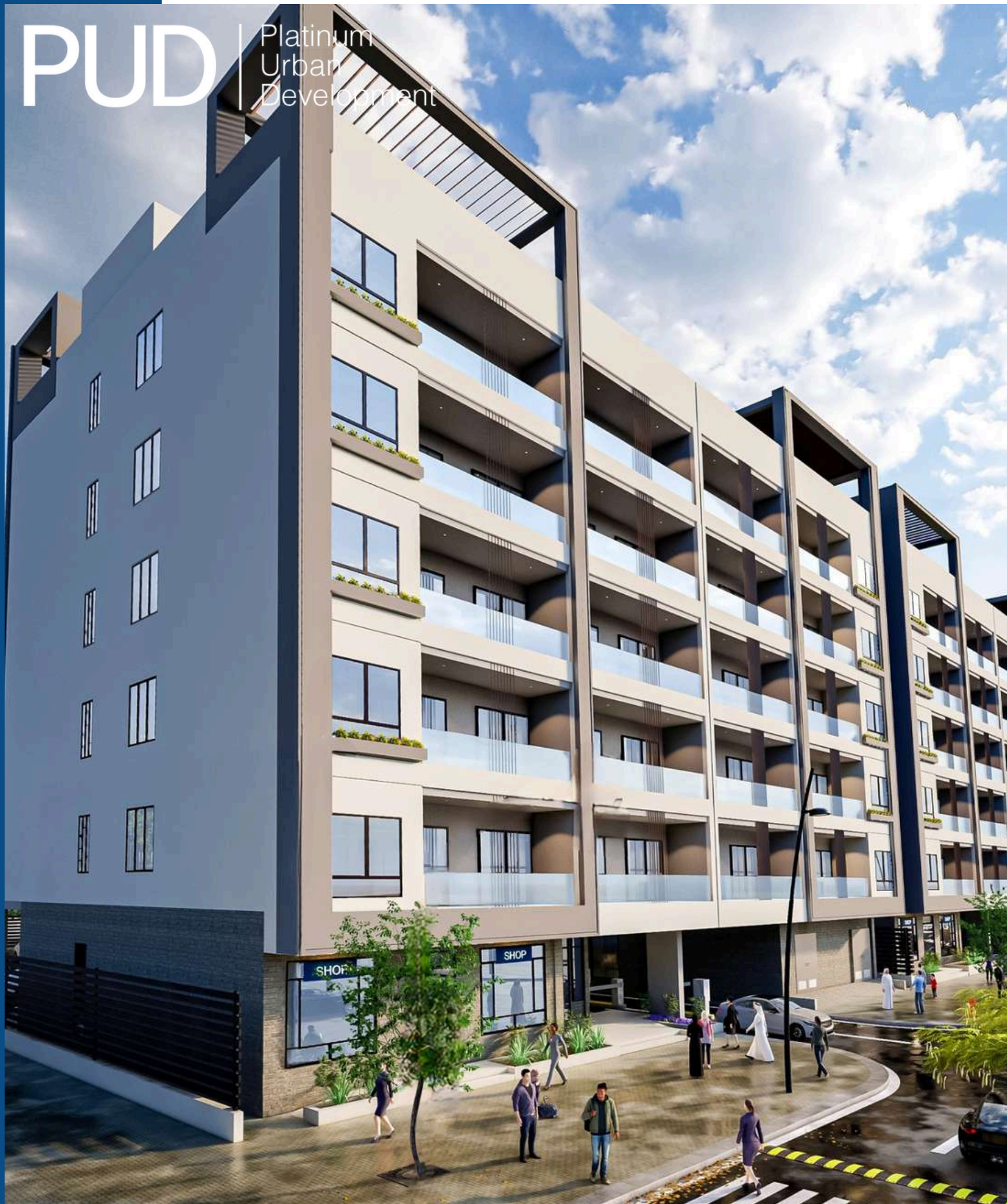


PUD | Platinum  
Urban  
Development



# PUD RESIDENCE I

## BROCHURE



---

[WWW.PUDDEVELOPMENT.COM](http://WWW.PUDDEVELOPMENT.COM)



# About PUD

Established in 2023, **PUD | Platinum Urban Development** prides more than **15 years of experience** in local and region markets by managed **real estate projects** and providing high-end architect, engineering services, and consultancy to help **real estate developers** to deliver success in their projects.

## Architects, Builders & **Developers**

**PUD** have alliances with **construction, engineering & business entities** that help us define the goals of each project and work to achieve them with precision and **quality management** with a distinctive and **unique architectural heritage.**

We always strive to **build upscale properties** that adds to the style of **family & professional life**, and to provide a property with a distinctive price and quality of living to **meet the needs and aspirations for our clients.**

# FROM **AL SHAMKHA** TO THE WORLD

**Al Shamkha** is a unique, self-sufficient residential neighborhood, with easy access to the best island and city living. **Abu Dhabi International Airport** lies just minutes from its driveways, while iconic destinations including Al Forsan International Sports Resort, Masdar City and **Yas Island** are only a short ride away.

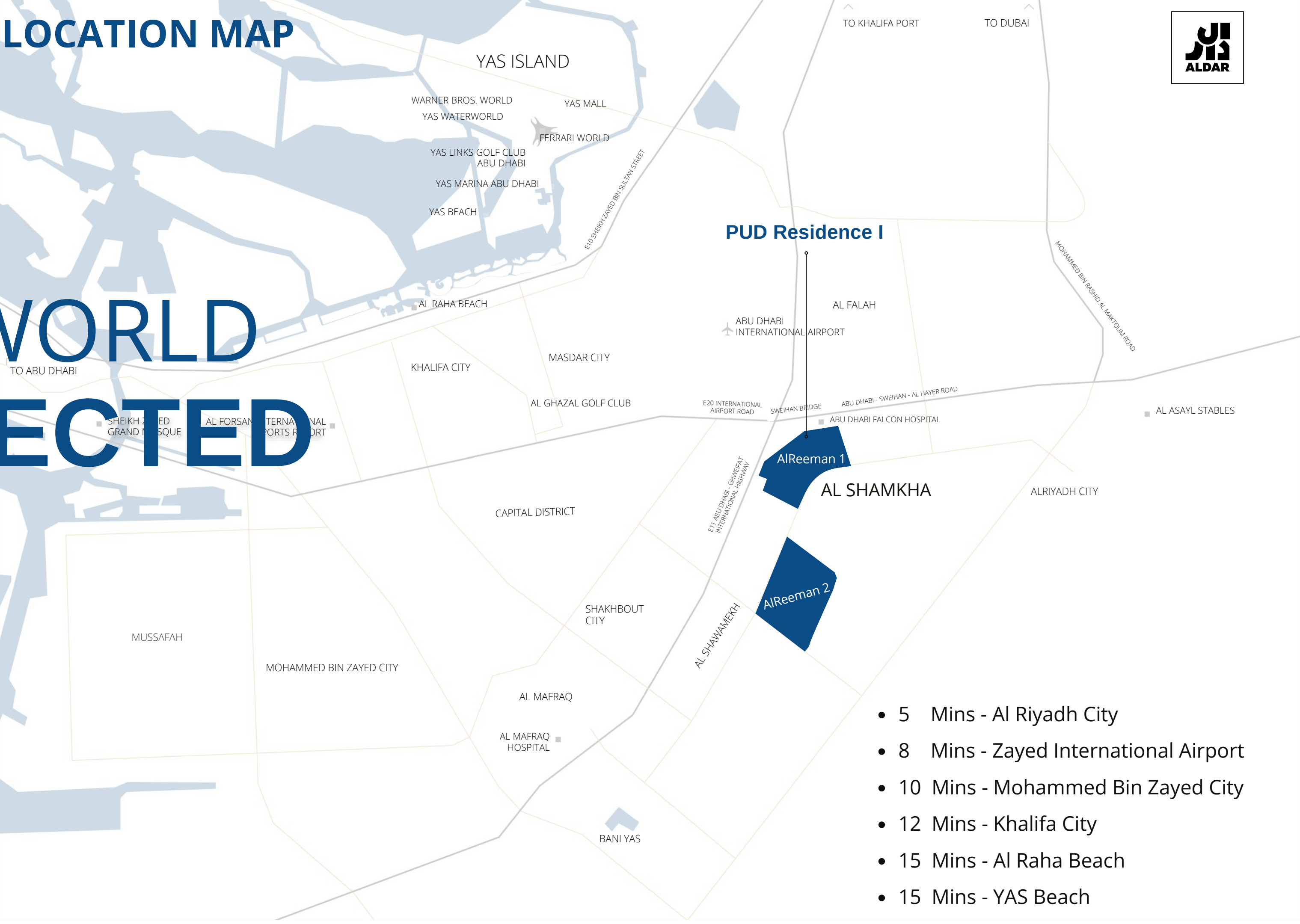
Planning and development by **ALDAR Properties**.



MASTER DEVELOPER

LOCATION MAP

YOUR WORLD  
CONNECTED



- 5 Mins - Al Riyadh City
- 8 Mins - Zayed International Airport
- 10 Mins - Mohammed Bin Zayed City
- 12 Mins - Khalifa City
- 15 Mins - Al Raha Beach
- 15 Mins - YAS Beach





• **PUD Residence I**

• **PUD Residence II**

Abu Dhabi Road

# Al Reeman I Master Plan

- 5 Mins - Al Riyadh City
- 8 Mins - Zayed International Airport
- 10 Mins - Mohammed Bin Zayed City
- 12 Mins - Khalifa City
- 15 Mins - Al Raha Beach
- 15 Mins - YAS Beach



MASTER DEVELOPER



**ABU DHABI,  
YOUR PERFECT HOME AWAITS!**





# A LIFE OF LEISURE.



## IN AL REEMAN I



# AMENITIES & COMMUNITY FACILITIES



KIDS ROOM

RUNNING & CYCLING TRACKS

COMMUNITY ROOM

OUTDOOR TERRACE

MOSQUE

SCHOOLS

RETAIL & F&B

COMMUNITY CENTRES

FITNESS ACTIVITIES



# PUD Residence I Tower

[About PUD](#)

[Master Plan](#)

[Al Reeman  
Facilities](#)

[PUD Residence I  
Tower](#)

[Type Of Studios &  
Apartments](#)

[Project in  
numbers](#)

[Contact Us](#)



Total Built up Area

4,735 M<sup>2</sup>

Number of Units

47

Type of Units

- Studios
- 1 Bedroom
- 2 Bedroom
- 3 Bedroom Apartments





MORE THAN JUST A BUILDING,  
WE CREATE EXPERIENCE





# WHERE MODERN DESIGN, MEETS REALITY!





SMALL DETAILS,  
MAKE BIG DETAILS

PUD | Platinum  
Urban  
Development





# Fitness & GYM Area





BUILDING A BETTER  
TOMORROW, **TODAY!**





SMALL DETAILS  
MAKE YOUR DAY





# COMFORT MEETS SOPHISTICATION





**FOCUS ON THE DETAILS  
OF YOUR COMFORT**





# Type Of **Studios & Apartments**

[About PUD](#)

[Master Plan](#)

[Al Reeman  
Facilities](#)

[PUD Residence I  
Tower](#)

[Type Of Studios &  
Apartments](#)

[Project in  
numbers](#)

[Contact Us](#)



# Type Of Studio Units

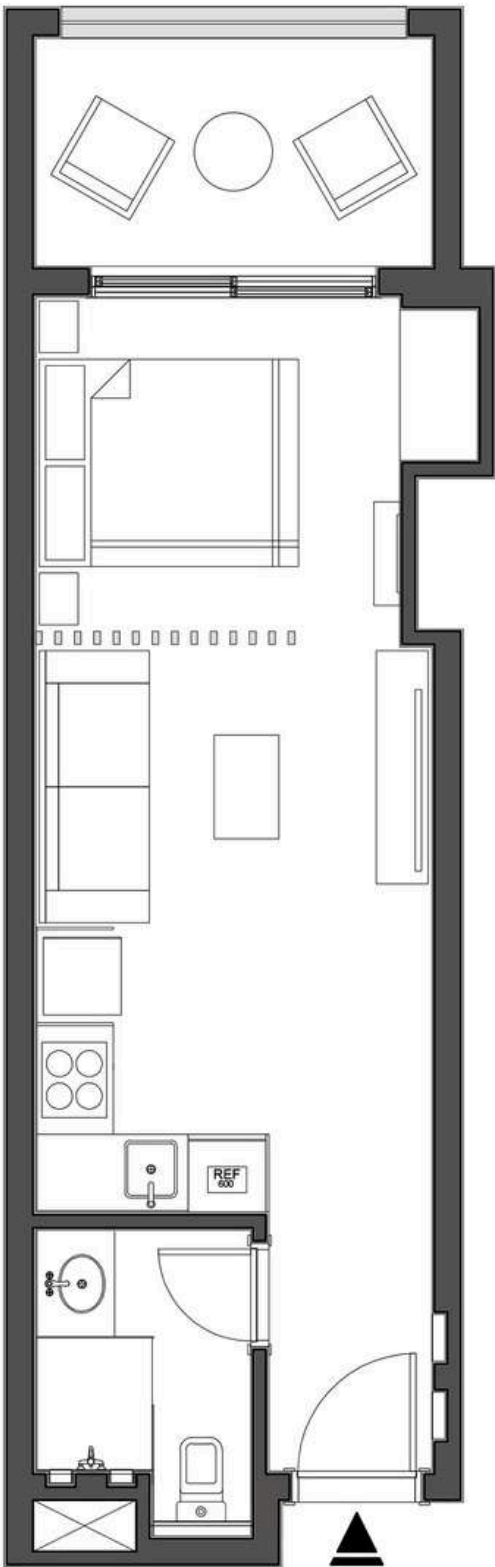
## Type Of Studio Units

- Type 01
- Type 02
- Type 03

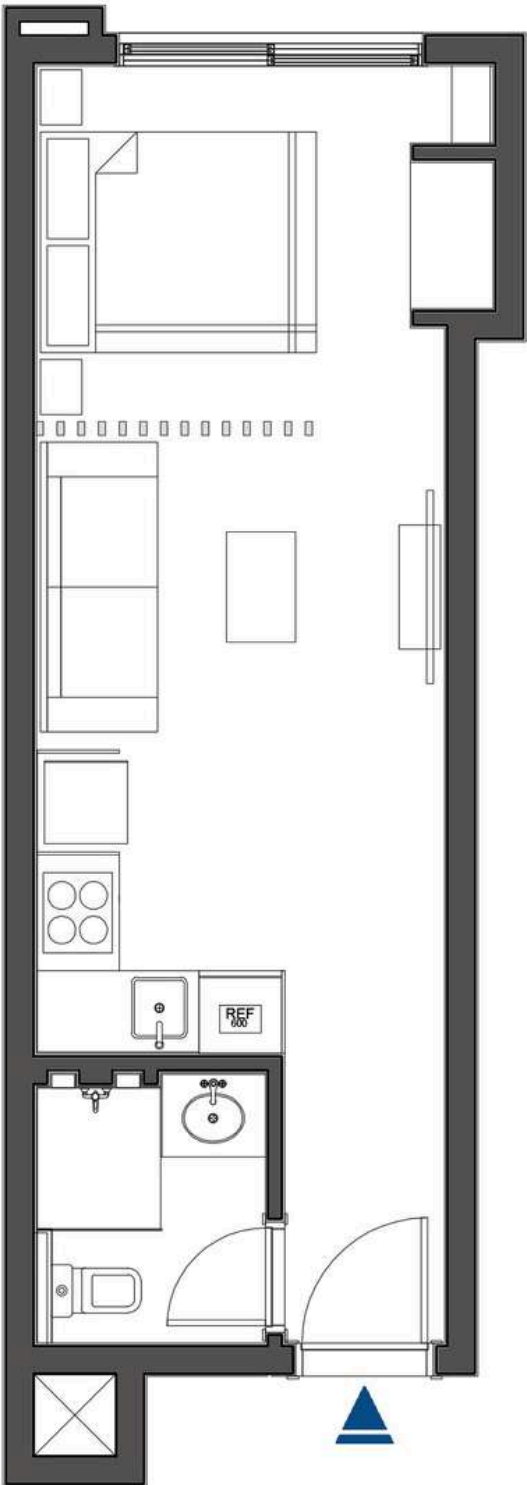
Scan Your Home



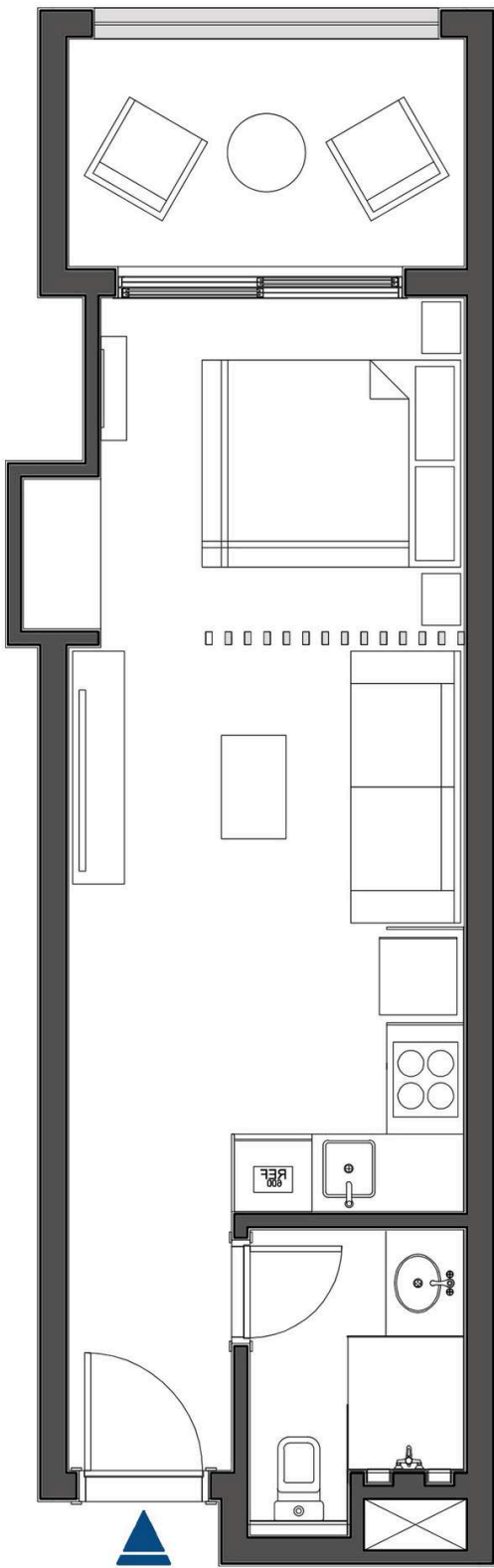
Area 419.69 sqf



Area 362.53 sqf



Area 418.93 sqf



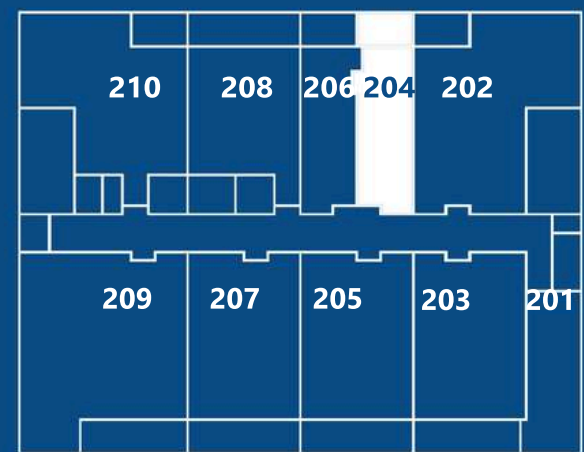


UNIT 204

STUDIO

Area    419.69 sqf

KEY PLAN



SECOND FLOOR

419.69

SQF

Total Area

Open Space	195.37	sqf
Kitchen	42.63	sqf
Bathroom	43.92	sqf
Corridor	27.99	sqf

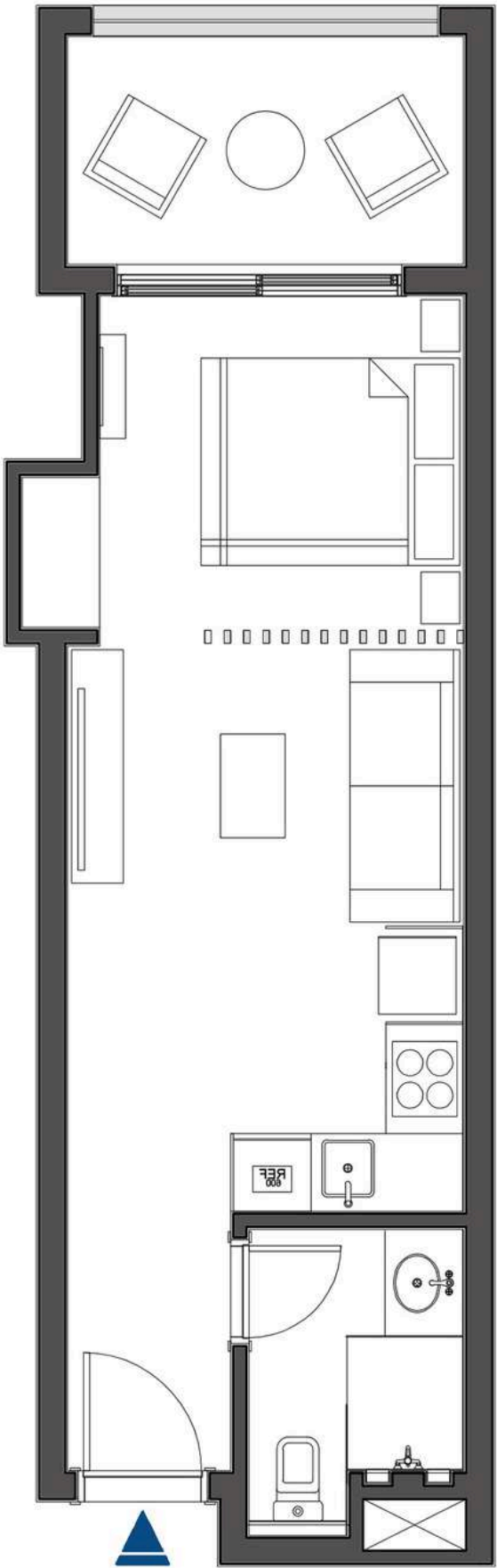
Balcony

60.06

sqf

Studio

Standard





UNIT 401

STUDIO

Area    362.53 sqf



FOURTH FLOOR

362.53

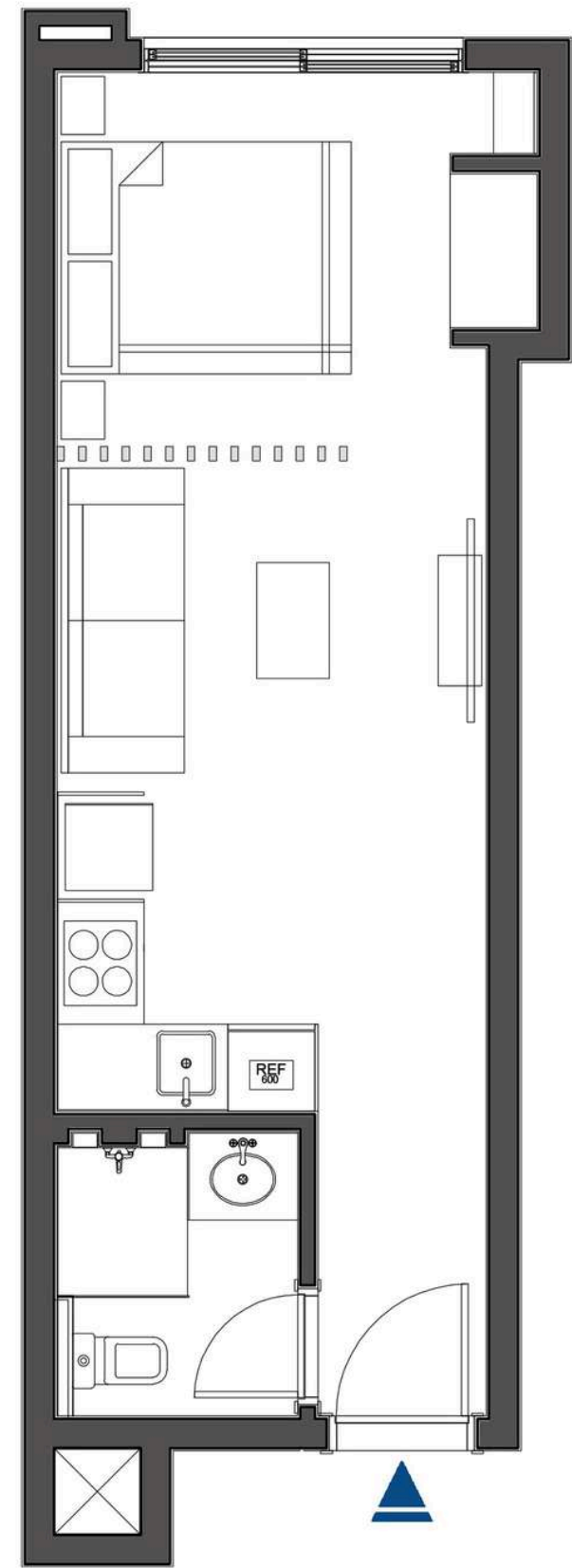
SQF

Total Area

Open Space	196.66	sqf
Kitchen	42.63	sqf
Bathroom	36.60	sqf
Corridor	27.13	sqf

Studio

Economy



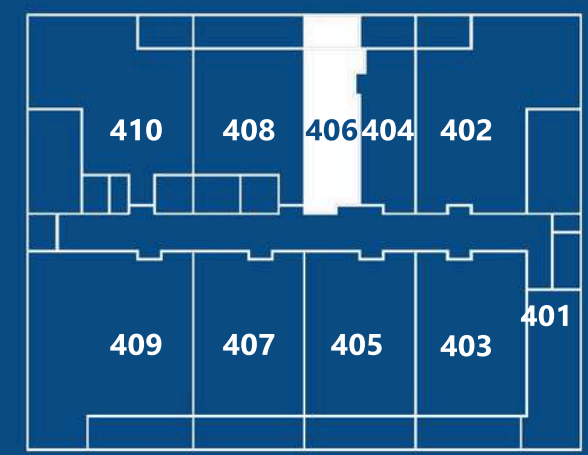


UNIT 406

STUDIO

Area    418.93 sqf

KEY PLAN



FOURTH FLOOR

418.93

SQF

Total Area

Open Space	195.04	sqf
Kitchen	42.63	sqf
Bathroom	43.92	sqf
Corridor	27.99	sqf

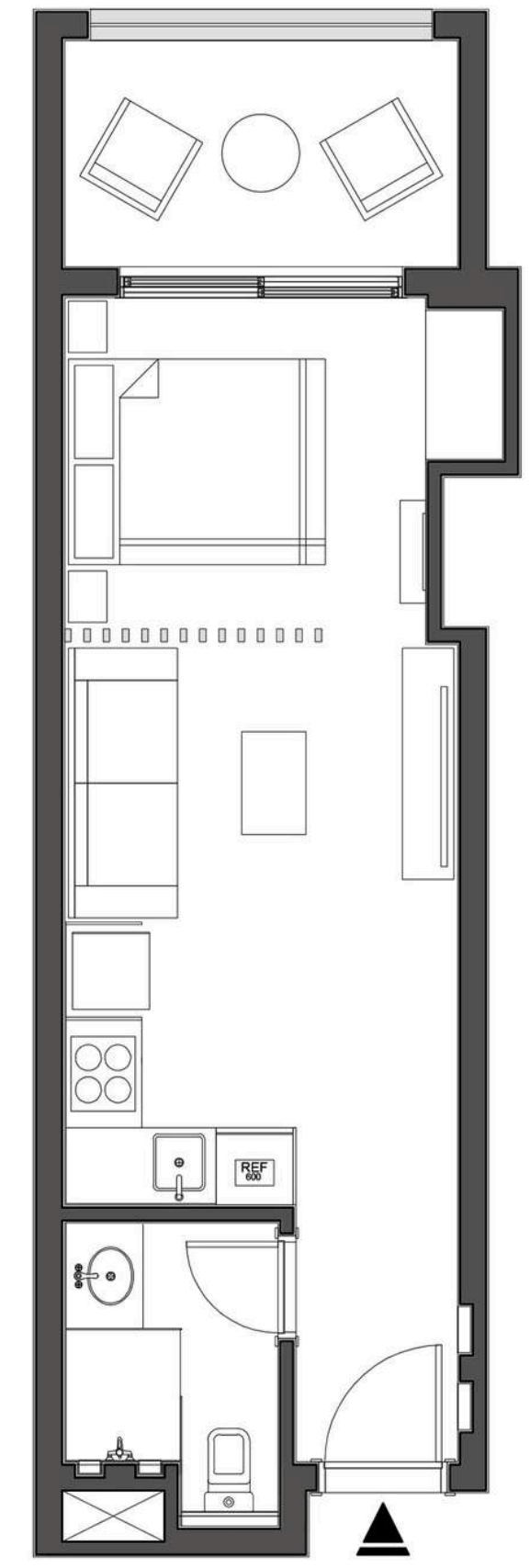
Balcony

60.06

sqf

Studio

Standard





# Type Of 1 Bedroom Units

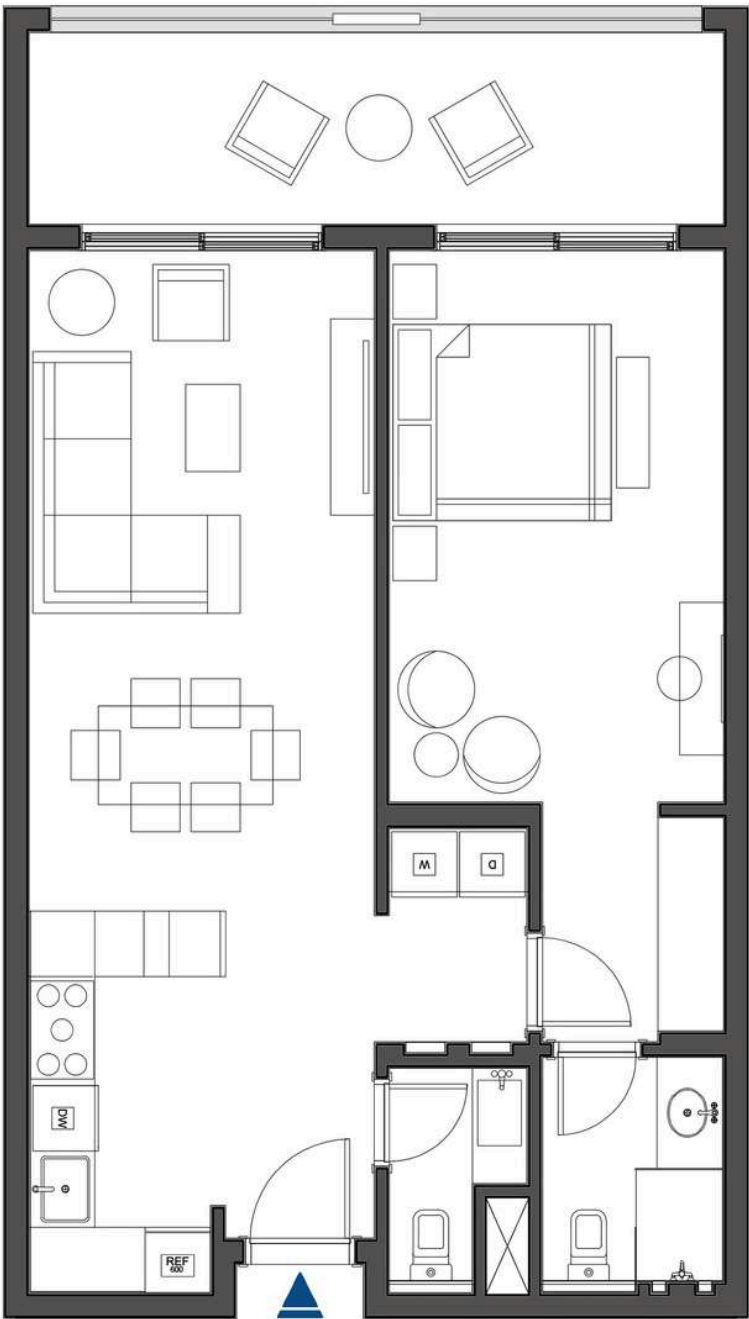
LIVING + 1 ROOM

- Type 11
- Type 11 + GT
- Type 12
- Type 13
- Type 14

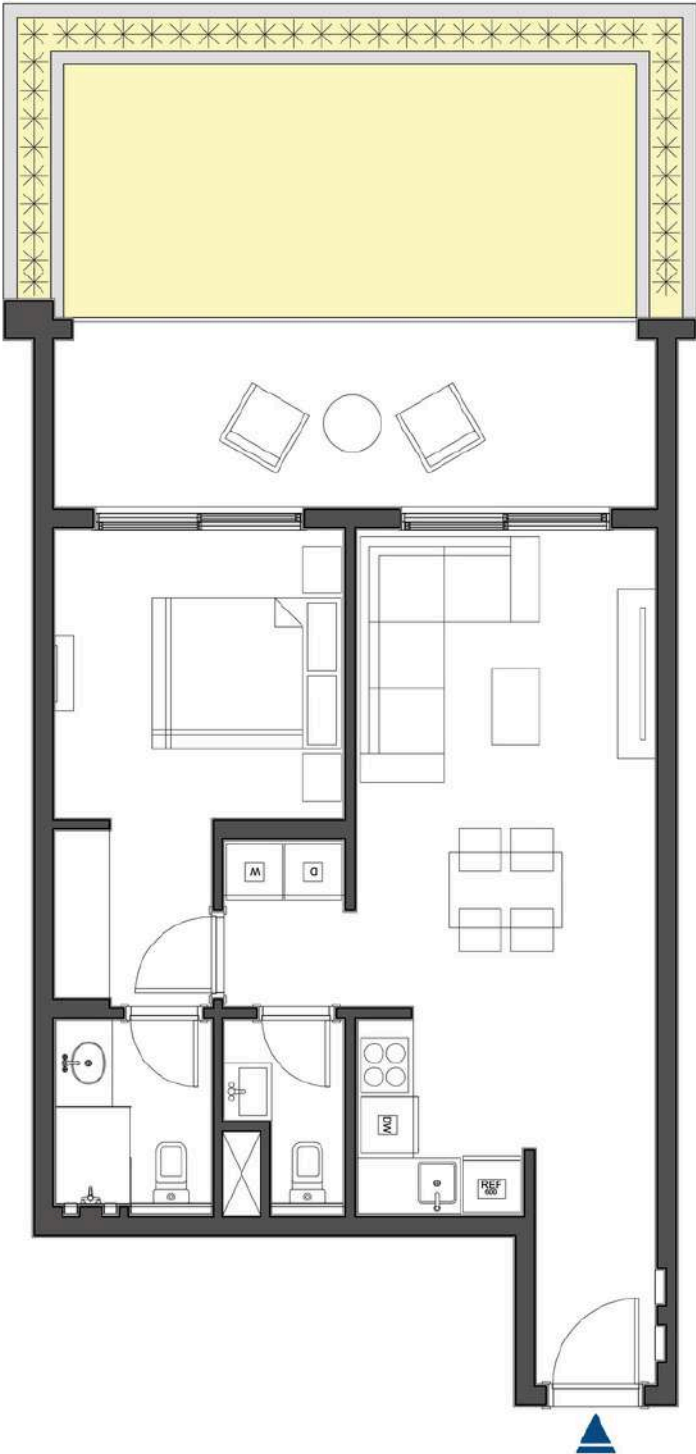
Scan  
Your **Home**



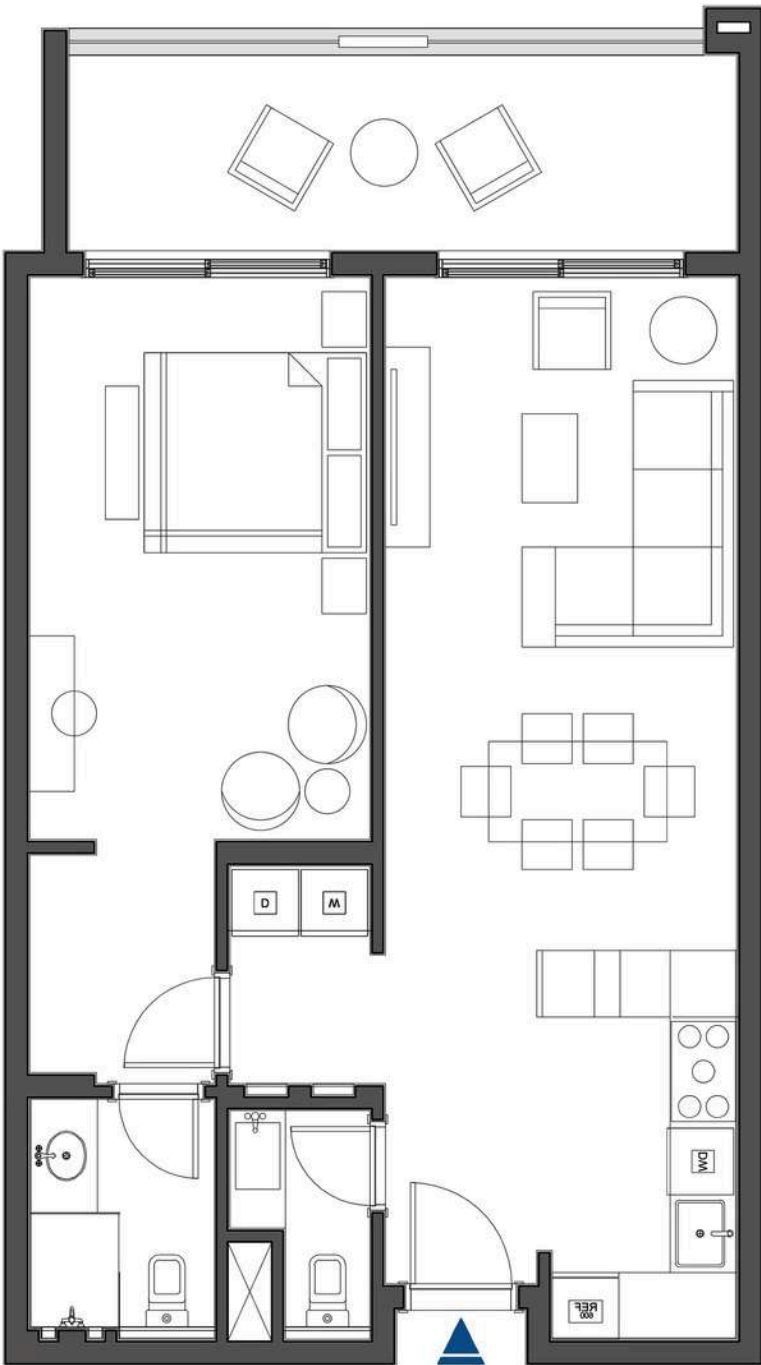
Area 846.05 sqf



Area 729.69 sqf  
Garden Area 236 sqf



Area 838.95 sqf



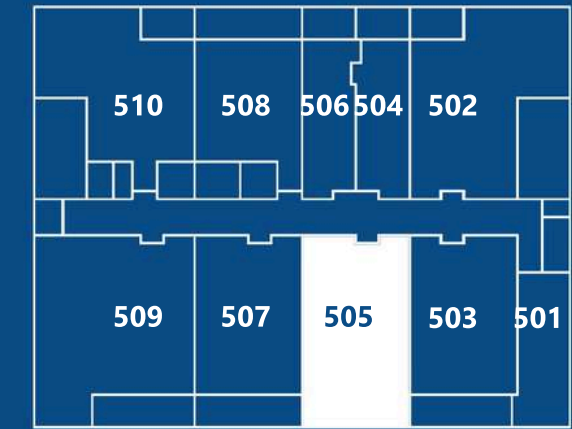


UNIT 505

LIVING + 1 ROOM

Area846.05 sqf

KEY PLAN



FIFTH FLOOR

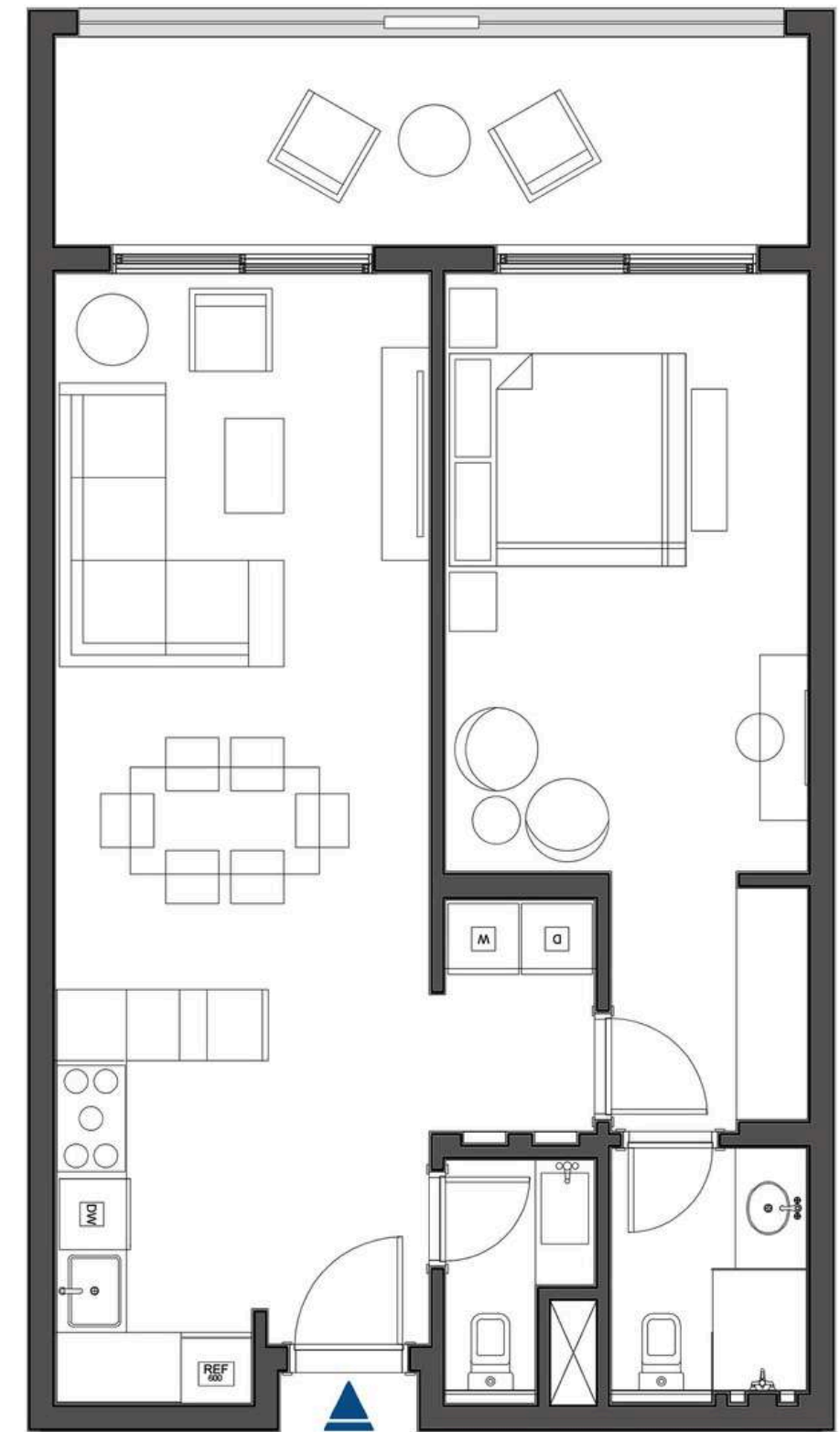
Master Bedroom	170.18	sqf
Dressing Room	38.43	sqf
Master Bathroom	40.26	sqf
Living	258.23	sqf
Kitchen	64.05	sqf
Toilet	29.39	sqf
Corridor	18.08	sqf
Utility	11.19	sqf
Balcony	124.00	sqf

1 Bedroom

Economy

846.05 SQF

Total Area





UNIT 104

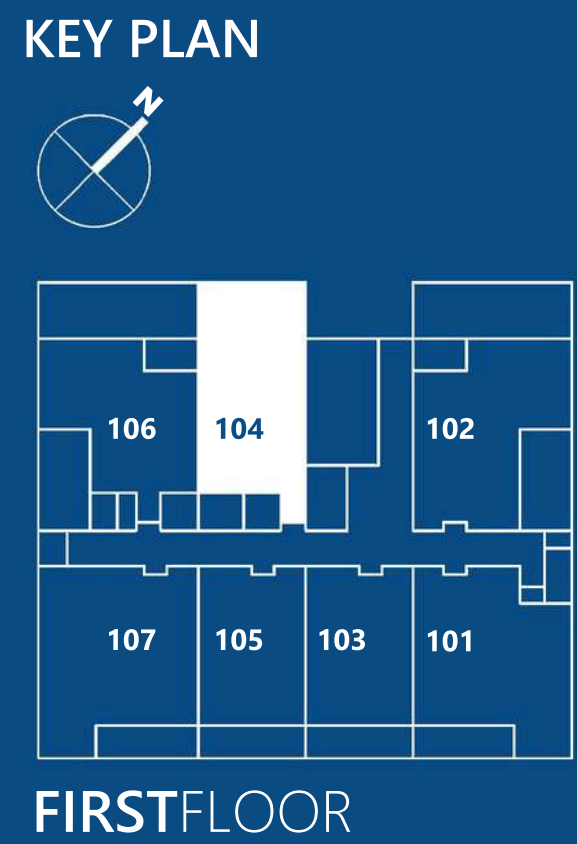
LIVING + 1 ROOM

Area

729.69 sqf

Garden Area

236 sqf



729.69 SQF

Total Area

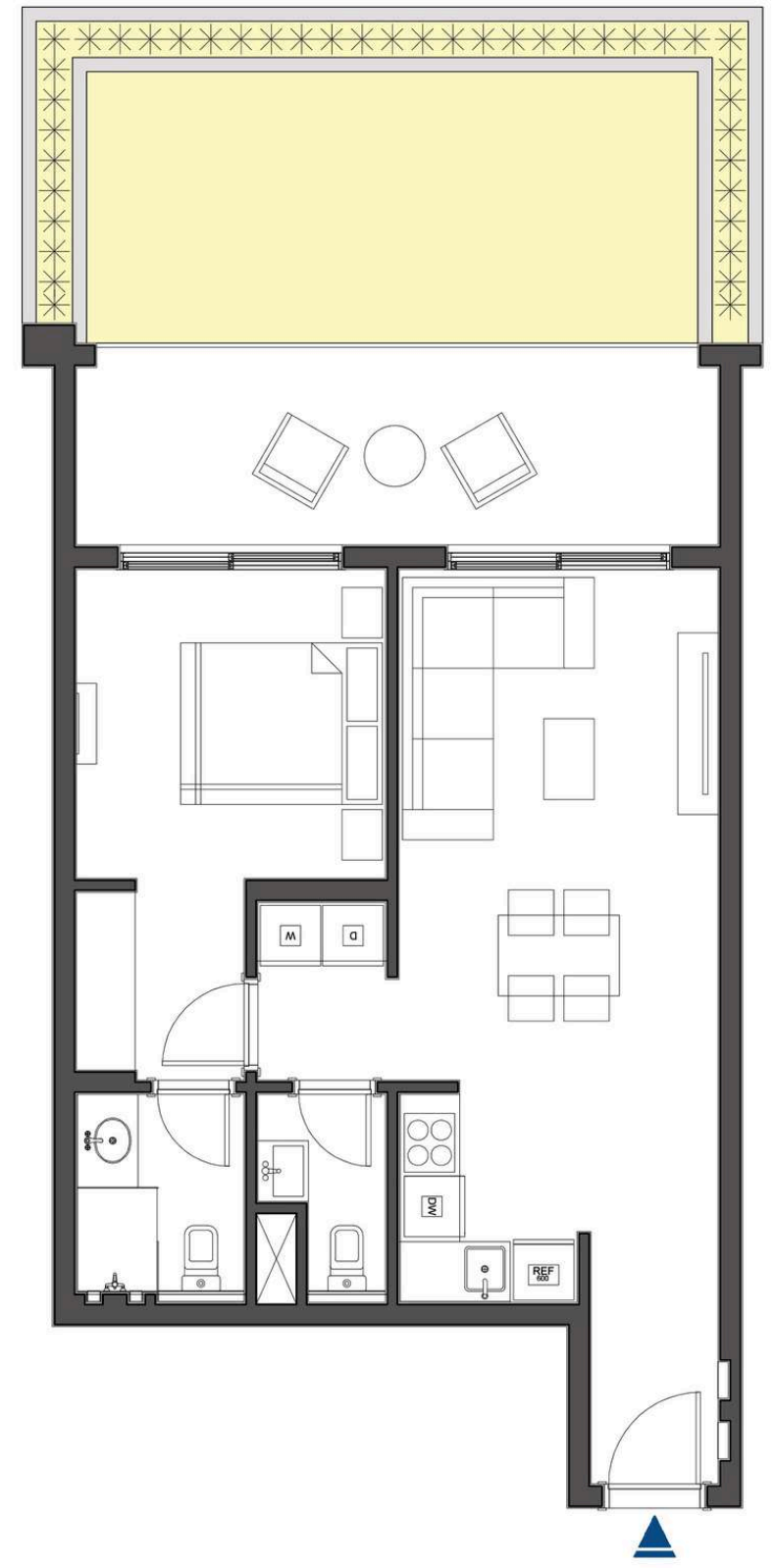
236 SQF

Garden Area

Master Bedroom	103.44	sqf
Dressing Room	34.77	sqf
Master Bathroom	38.43	sqf
Living	234.55	sqf
Kitchen	40.69	sqf
Toilet	29.39	sqf
Corridor	15.72	sqf
Utility	10.76	sqf
Balcony	124.00	sqf

1 Bedroom

Luxury





UNIT 203

LIVING + 1 ROOM

Area838.95 sqf



SECOND FLOOR

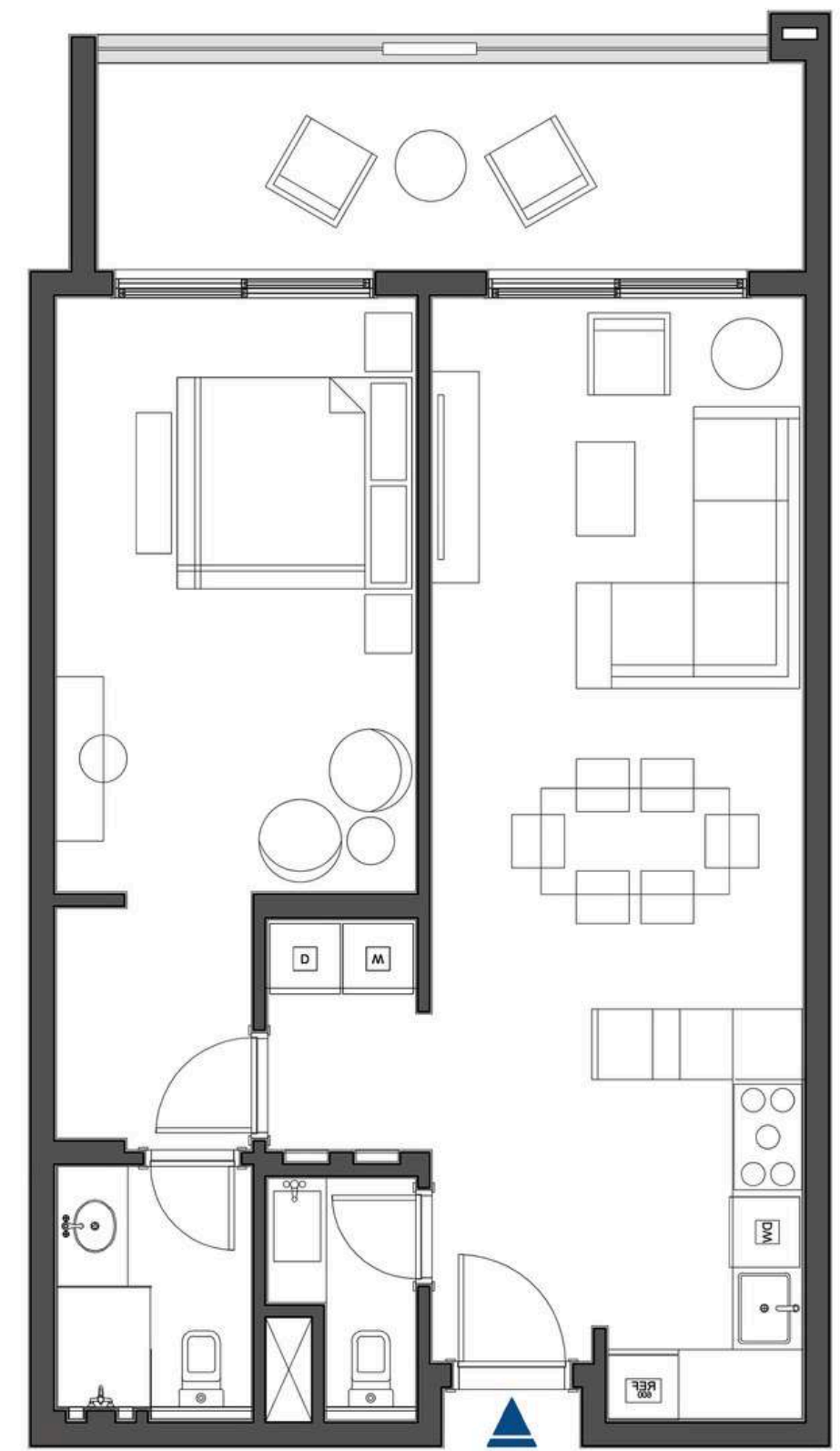
Master Bedroom	170.18	sqf
Dressing Room	38.43	sqf
Master Bathroom	40.26	sqf
Living	255.32	sqf
Kitchen	66.95	sqf
Toilet	40.26	sqf
Corridor	18.08	sqf
Utility	11.19	sqf
Balcony	117.33	sqf

1 Bedroom

Standard

838.95 SQF

Total Area





# Type Of 2 Bedroom Units

## LIVING + 2 ROOMS

- Type **21**
- Type **21 + GT**
- Type **22 + GT**
- Type **23**

Area 1,061.12 sqf

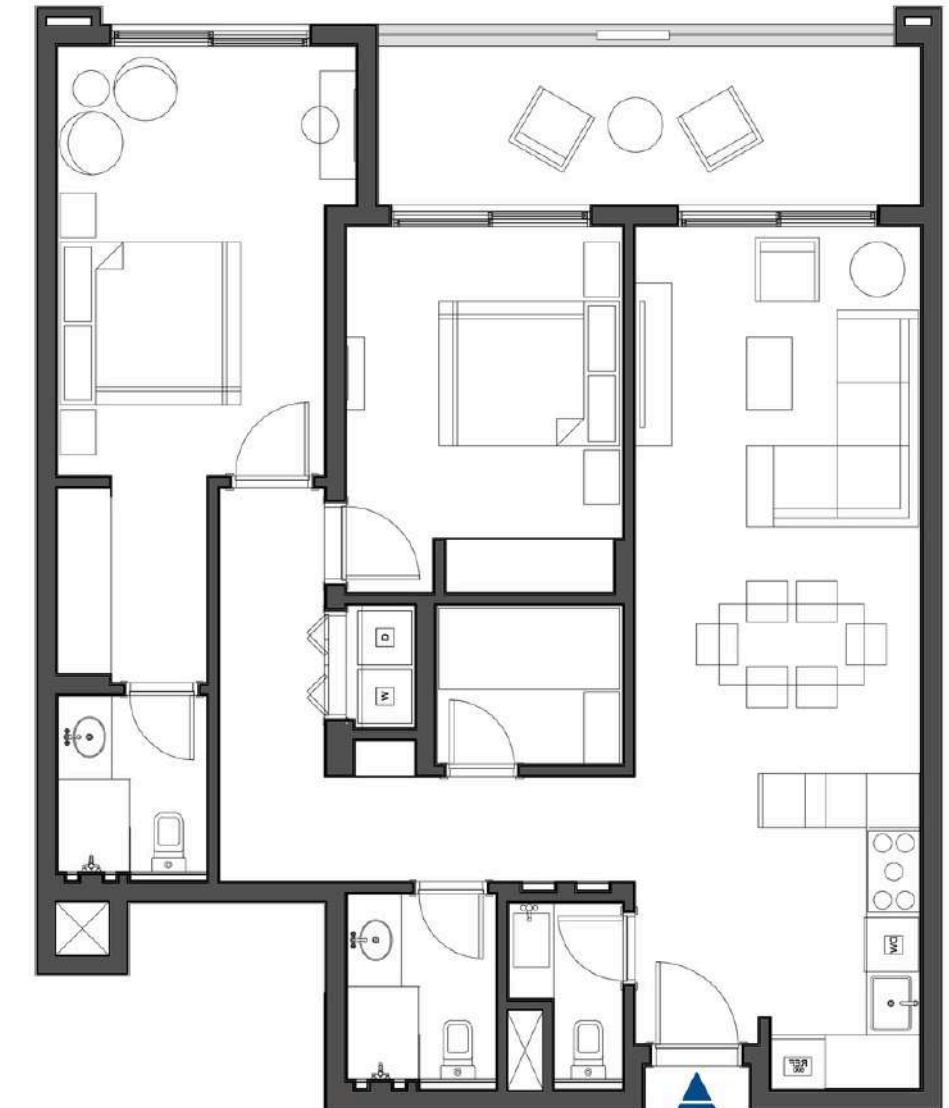
Garden Area 340 sqf



Area 932.49 sqf



Area 1,204.06 sqf



Scan  
Your **Home**

SCAN ME





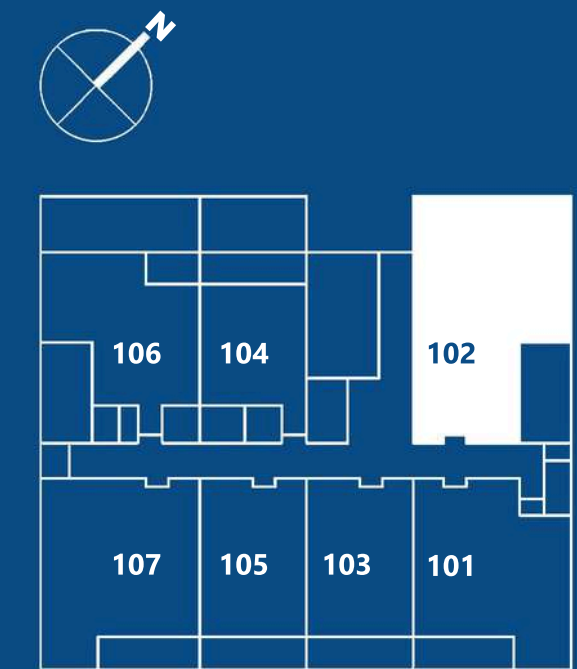
UNIT 102

LIVING + 2 ROOMS

Area    1,061.12 sqf

Garden Area    340 sqf

KEY PLAN



FIRST FLOOR

1,061.12 SQF

Total Area

340 SQF

Garden Area

Master Bedroom	154.68	sqf
Dressing Room	40.69	sqf
Master Bathroom	40.37	sqf
Bedroom	140.15	sqf
Living	261.78	sqf
Kitchen	64.37	sqf
Bathroom	40.26	sqf
Toilet	29.39	sqf
Corridor	64.58	sqf
Utility	31.00	sqf
Balcony	60.06	sqf

2Bedroom

Luxury

2

3

1

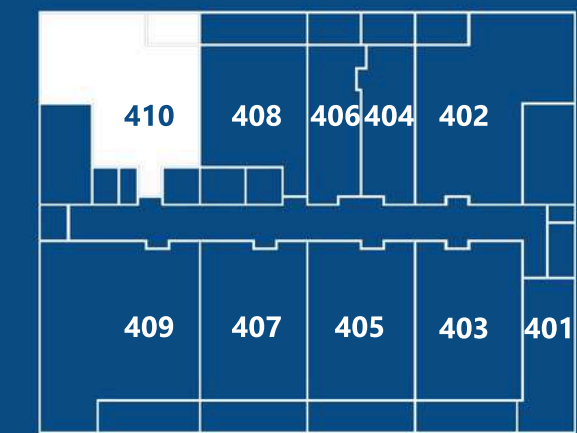




UNIT 410

LIVING + 2 ROOMS

Area    932.49 sqf



FOURTH FLOOR

932.49

SQF

Total Area

Master Bedroom	145.21	sqf
Dressing Room	40.69	sqf
Master Bathroom	38.43	sqf
Bedroom	140.15	sqf
Living	232.39	sqf
Kitchen	66.83	sqf
Bathroom	46.50	sqf
Storage	9.80	sqf
Corridor	24.86	sqf

Balcony

60.06

sqf

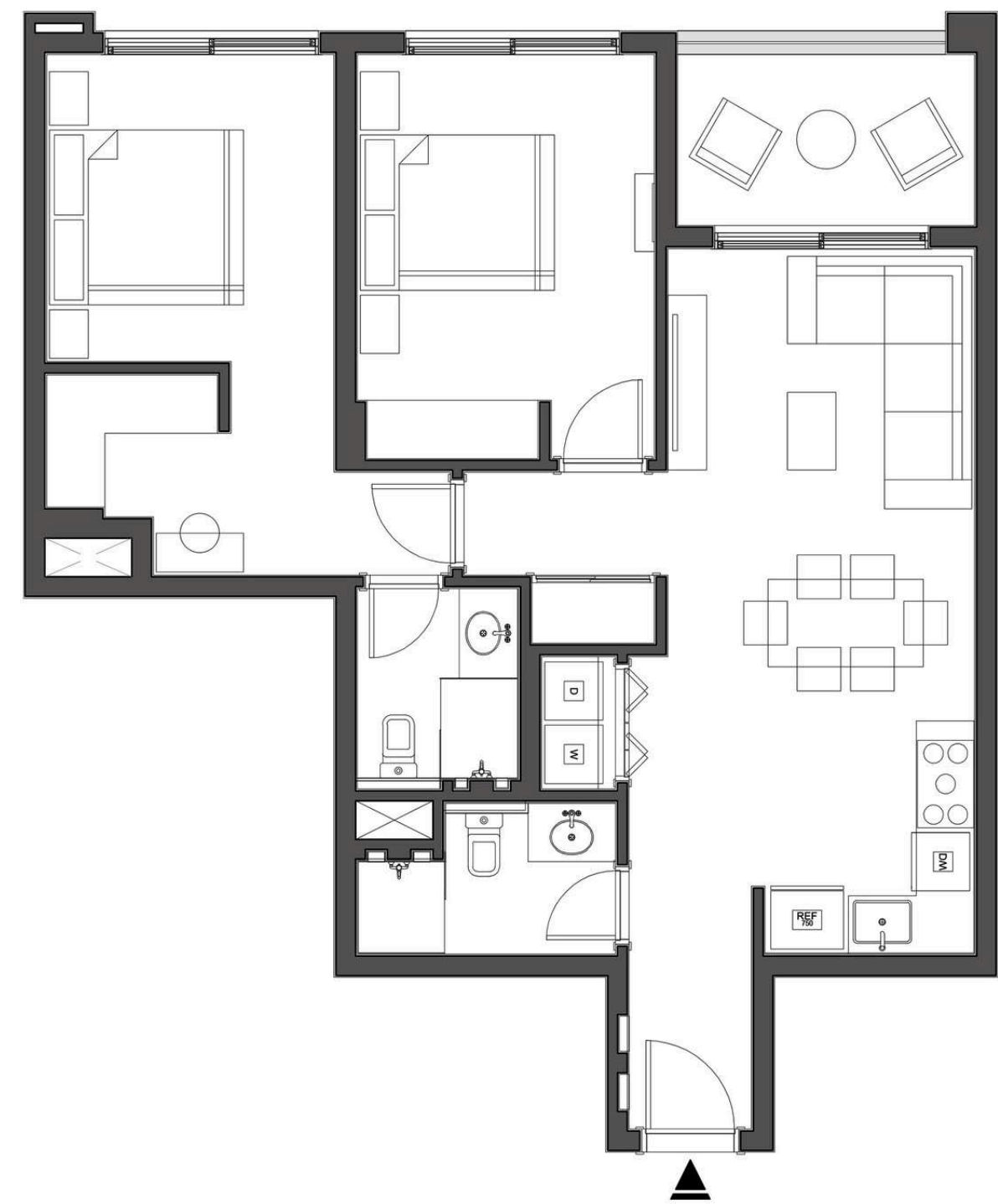
2Bedroom

Economy

  
2

  
2

  
1

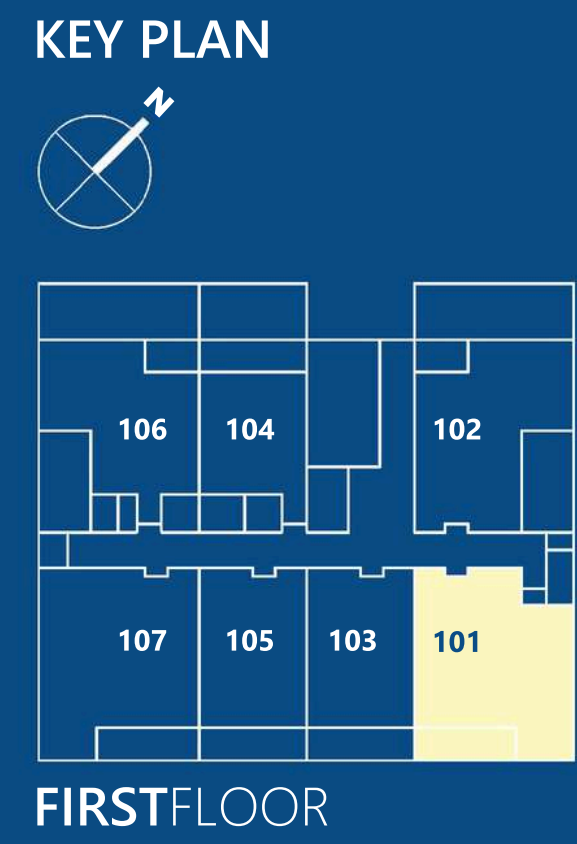




UNIT 101

LIVING + 2 ROOMS

Area    1,204.06 sqf



1,204.06<sup>SQF</sup>

Total Area

Master Bedroom	161.78	sqf
Dressing Room	40.26	sqf
Master Bathroom	38.43	sqf
Bedroom	136.81	sqf
Maid room	40.69	sqf
Living	261.78	sqf
Kitchen	64.37	sqf
Bathroom	40.26	sqf
Toilet	29.39	sqf
Corridor	103.76	sqf
<b>Balcony</b>	<b>117.33</b>	<b>sqf</b>

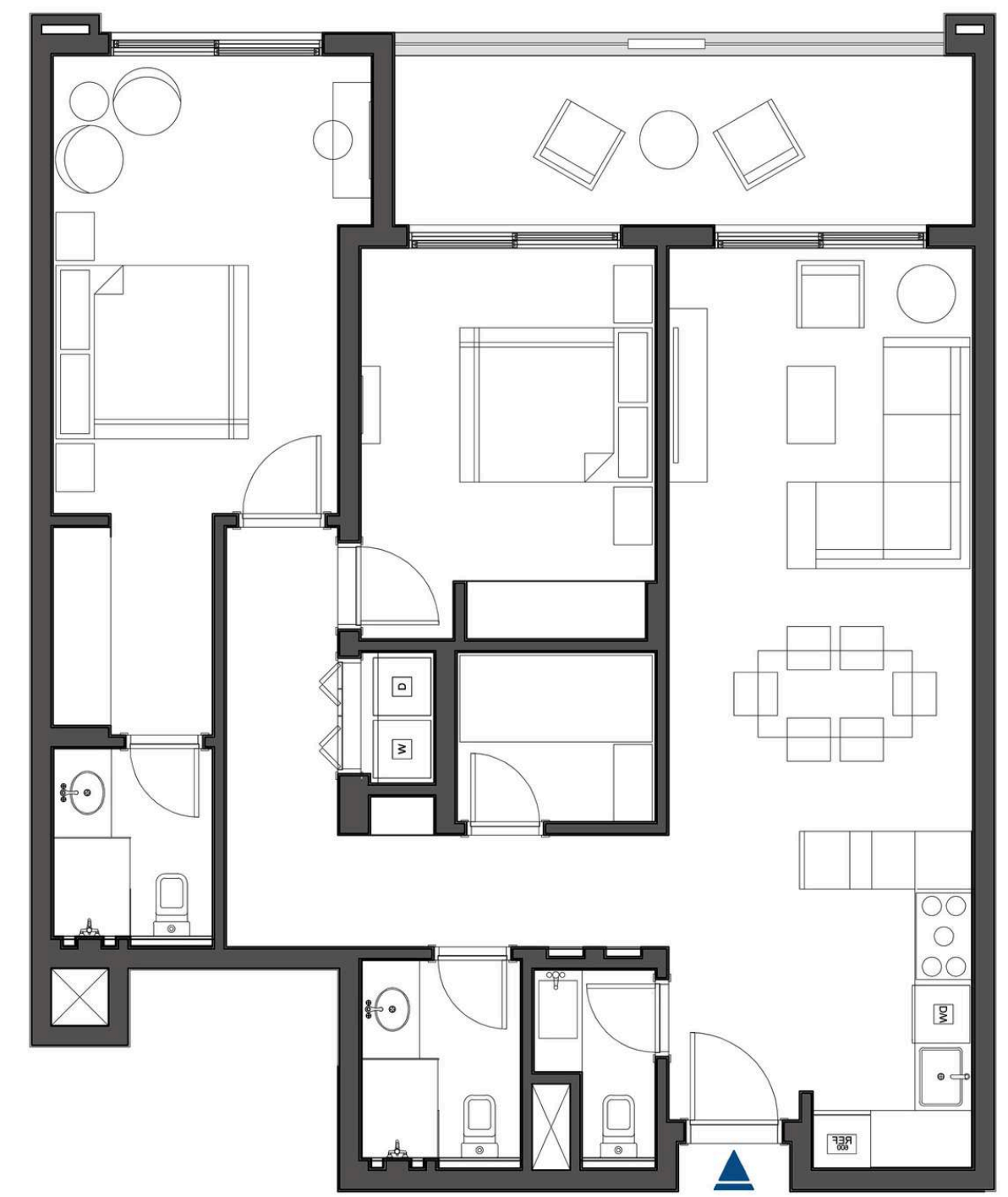
2Bedroom

Standard

  
2

  
3

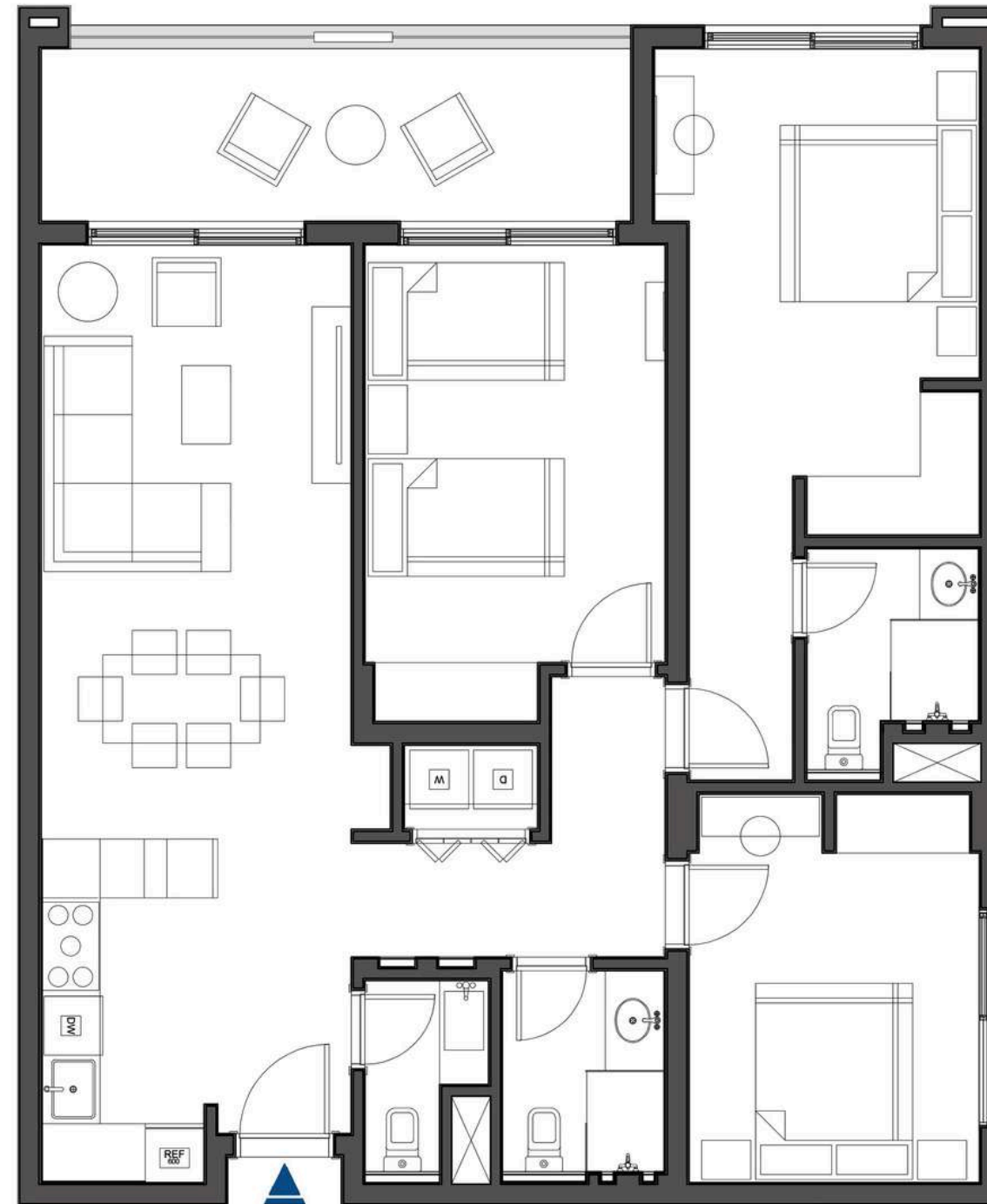
  
1





# Type Of 3 Bedroom Units

Area 1,274.67 sqf






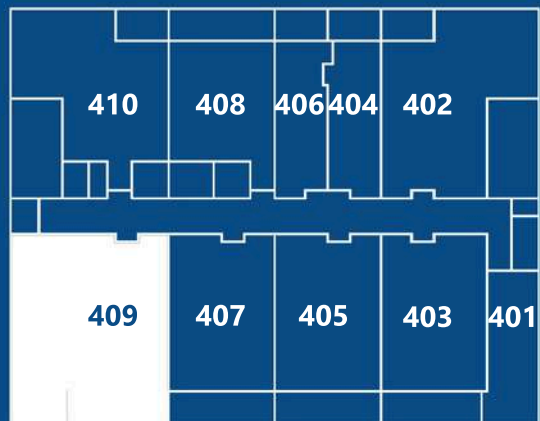
UNIT 409

LIVING + 3 ROOMS

Area 1,274.67 sqf

KEY PLAN





FOURTH FLOOR

1,274.67

SQF

Total Area

Master Bedroom	167.49	sqf
Dressing Room	29.06	sqf
Master Bathroom	46.50	sqf
Bedroom 1	155.11	sqf
Bedroom 2	129.17	sqf
Living	261.78	sqf
Kitchen	64.37	sqf
Bathroom	40.26	sqf
Toilet	29.39	sqf
Utility	15.07	sqf
Corridor	63.29	sqf
Balcony	117.33	sqf

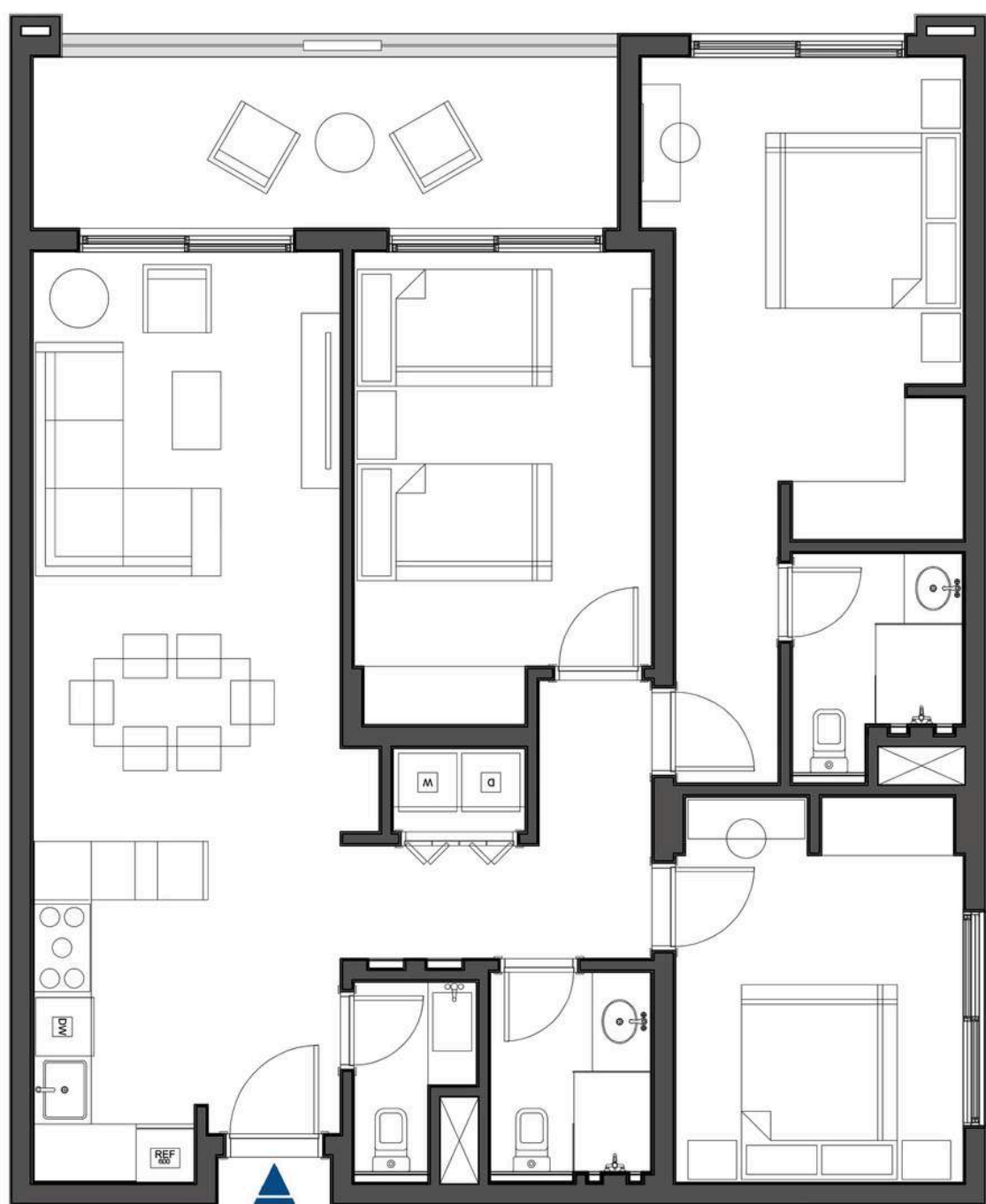
3Bedroom

Luxury

  
3

  
3

  
1





# Key Facts

No. of units

Types

Handover date

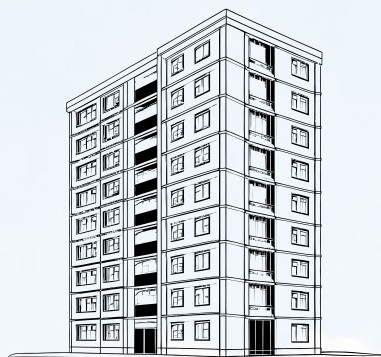
47  
Units

Studios  
1 Bedrooms  
2 Bedrooms  
3 Bedrooms

Q3 - Q4  
2026



# Project In Numbers



**47**

Premium Units



**30.00 m**

Building Height



**G+5**

No. Of Floors



**4,735** M<sup>2</sup>

Land Area



Commercial Area



Diverse Unit Types



**67**

Car Parking Slot



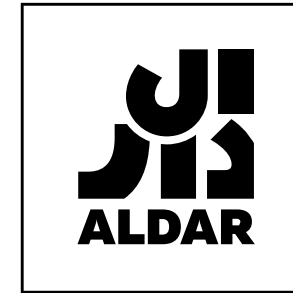
**12**

Bicycle Parking  
Slot



# Strategic Partners :

- MASTER DEVELOPER



- 
- Development By



- 
- Engineering & Design Consultancy



- 
- Business & Management Consultancy







DEVELOPMENT BY



MASTER DEVELOPER

 +971-50602-9091

Office Location: Abu Dhabi -  
Corniche Road - 3 Sails Tower Office H1



@PudDevelopment

[Sales@puddevelopment.com](mailto:Sales@puddevelopment.com)

[WWW.PUDDEVELOPMENT.COM](http://WWW.PUDDEVELOPMENT.COM)